

# 1991 SKY TRAK 6000M TELEHANDLER

## INSPECTION DETAILS

Inspection Type	[REDACTED]
Inspection Form	Standard
Inspection #	10143622
Inspection Status	Inspected
Created	08/22/24 13:07:18
Updated	08/22/24 14:18:19
Created By	[REDACTED]
Inspector	[REDACTED]
Salesperson	[REDACTED]
Serial #	MIF1034
SMU / Hours	2,130
Location	lake hills, TX, United States



## CLIENT DETAILS

Name	[REDACTED]
Company	[REDACTED]
Address	[REDACTED]
City	Lake Hills
State	Texas
Country	United States
Postal Code	[REDACTED]
Email	[REDACTED]
Phone	[REDACTED]

## FEATURES

### General

- Carriage Tilt - Fixed Tilt
- Coupler - Quick
- Coupler Type - Hydraulic
- Lighting
- ROPS - Enclosed

### Attachments

- Forks - Pallet

## NOTES

engine oil leaks  
transmission drop box leaking  
carriage tilt cylinder leaking  
boom pad coming apart  
boom sections need to be adjusted--looseness  
floor mat torn  
front work lights inop  
rear tail lights inop  
door hard to open from inside.

## CONDITION

●●● Good

●● Fair

● Poor

Approved Repair

## GENERAL APPEARANCE

Cab or Canopy

●●●

📷4

Counterweight

●●●

📷1

Crankcase Guard / Battery Box

●●●

📷1

Differential Supports

●●●

Eng. Enclose Hood / Stack

●●●

📷2

Fenders

●●

several are bent

📷6

Fuel Tank

●●●

📷1

Grab Irons

●●●

📷3

Main Frame Welds

●●●

Paint

●●●

painted camo colors.

Radiator Grill & Shroud

●●●

📷1

Steps / Ladder

●●●

📷2

S.O.S. Taken

NO

## SAFETY ITEMS

Back Up Alarm

●●●

Brake Hold

●●●

Glass / Mirrors

●●●

📷2

Horn

●

not operational

Parking Brake

●●●

ROPS or Non-ROPS

●●●

Seat Belt

●●●

out of date.

📷1

## OPERATOR STATION

Dash Console

●●●

📷1

Door Latches

●●

door will not open from inside.

📷3

Gauges

●●●

📷1

Heater  
●●●

Meter  
●●●

📷1 Seat Cushion / Arm Rest  
●●●

📷1

Switches  
●●●

📷3 Windshield Wipers  
●  
not operational

📷2

Current O&MM  
**YES**

📷1 Current Parts Manual  
**NO**

Current Safety Manual  
**NO**

---

## ENGINE

Air Cleaners  
●●●

📷1 Engine Supports  
●●●

Fuel Injection System  
●●●

Turbocharger / Blower  
●●●

📷1

Blow By  
**NO**

Compression in Radiator  
**NO**

Fluid Levels OK?  
**NO**

Has Engine been rebuilt?  
**NO**

Knocking  
**NO**

Oil Leaks  
**YES**

📷1

Water in Oil  
**NO**

Anti-Freeze Color  
green

Fuel Level  
1/2

Oil Pressure (H/L/N)  
normal

Smoke (B/D/L/W)  
light

---

## COOLING SYSTEM

Belts / Pulleys  
●●●

Coolers  
●●●

Fan  
●●●

📷1

Fan Drive  
●●●  
belt

Hoses  
●●●

Radiator  
●●●

Water Pump



---

## ELECTRICAL, STARTING AND CHARGING SYSTEM

Alternator



Batteries / Cables



Lighting



numerous lights do not work.

Starter



Wiring



---

## TRANSMISSION

Case



Controls



Seals



Temp / Pressure Gauges



Torque Converter



Transmission - Forward



goes into all forward gears

Transmission - Reverse



goes into reverse

Transmission - Type



powershift

Universal Joints



Transmission - Noisy

**NO**

Notes - TRANSMISSION

transmission is leaking



---

## STEERING

Articulate P & B



Front Axle



Pivot P & B Trunnions



Steering Cylinder



Steering Linkage



Steering Valves / Pumps



Tie Rods / Rod Ends



Torsion Rods



## BRAKE

Brake Drums / Rotors



Control Valve



Lines



Pump



Type (Pedal, Lever)



pedal



Type (Wet, Dry)



dry

## HYDRAULICS

Carriage Cylinder



leaking



Frame Cylinder



Hose Lines



Lift Cylinders



Pumps & Valves



Tank



Trunnions



## BOOM

Boom Condition



Boom Pins



Pins & Bushings



## FINAL DRIVES

Housings



Planetaries / Diff



## TIRES

	Make / Serial#	Tread Depth in 1/32"	% Life Remaining	Recapped	Tread Cuts/Chunks	Side Cuts Section
Left Front	American contractor	20/32	62%	<b>NO</b>	<b>YES</b>	<b>NO</b>
Left Rear	American contractor	24/32	75%	<b>NO</b>	<b>YES</b>	<b>NO</b>
Right Front	general	29/32	90%	<b>NO</b>	<b>YES</b>	<b>NO</b>

Right Rear

American  
contractor

24/32

75%

NO

YES

NO

---

Tire Size - TIRES  
17.5 r 25

---

**COMMENTS, MISC. REPAIRS, GENERAL REMARKS**

comment 1

boom pads need to be shimmed  
and adjusted--noted play in  
boom and boom sections

comment 2

floor mat is torn



comment 3

carriage front guard is bent

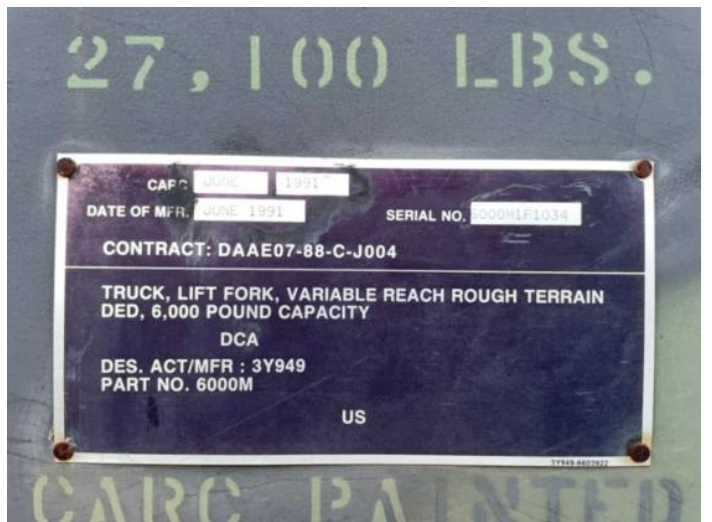


comment 4

extra pictures of carriage and  
forks.



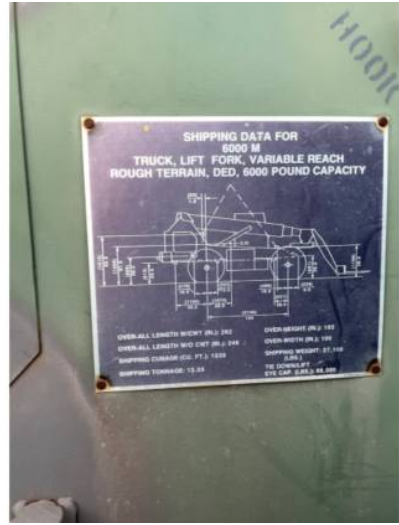
MARKETING PHOTOS (28)

















# LINE ITEM PHOTOS (91)

## Cab or Canopy



---

## Counterweight



Crankcase Guard / Battery Box



Eng. Enclose Hood / Stack



Fenders



several are bent







---

Fuel Tank  
●●●



---

Grab Irons  
●●●





Radiator Grill & Shroud



Steps / Ladder





---

Glass / Mirrors



---

Seat Belt



out of date.



---

Dash Console



---

## Door Latches



door will not open from inside.



---

## Gauges



Meter



Seat Cushion / Arm Rest



Switches

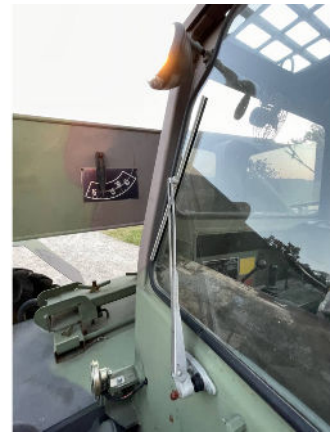






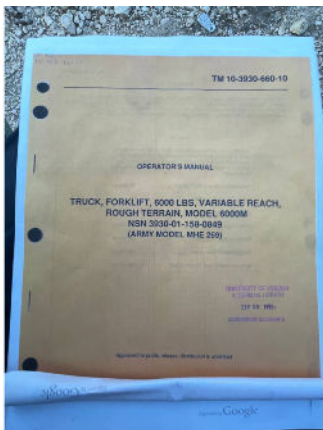
## Windshield Wipers

●  
not operational



## Current O&MM

**YES**



---

Air Cleaners



---

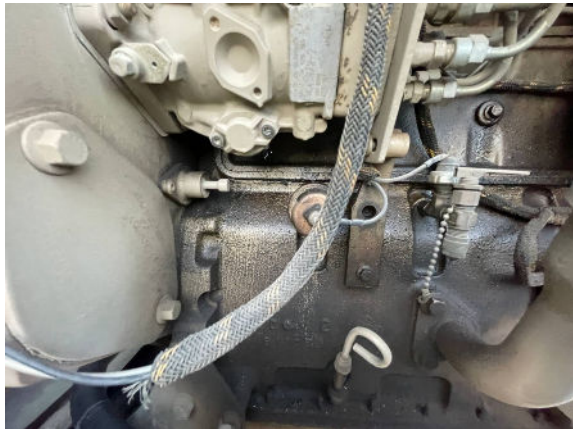
Turbocharger / Blower



---

Oil Leaks

**YES**



Fan



Batteries / Cables



Lighting

● numerous lights do not work.



## Controls



## Temp / Pressure Gauges

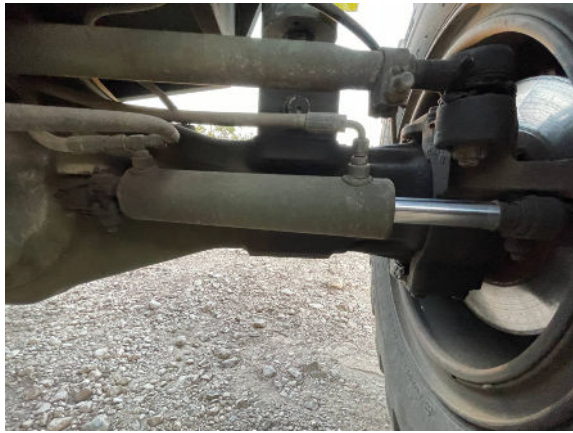


## Front Axle





## Steering Cylinder



## Brake Drums / Rotors







Type (Pedal, Lever)



pedal



---

Carriage Cylinder

●  
leaking



---

Frame Cylinder

●●●



---

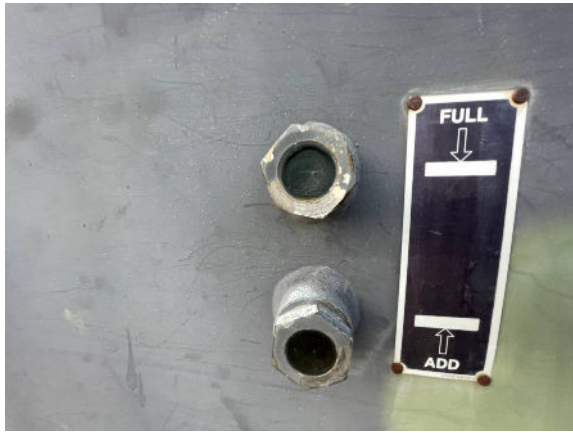
Lift Cylinders

●●●





Tank



Boom Condition



---

## Housings



---

## Notes - TRANSMISSION

transmission is leaking





	Make / Serial#	Tread Depth in 1/32"	% Life Remaining	Recapped	Tread Cuts/Chunks	Side Cuts Section
Left Front	American contractor	20/32	62%	<b>NO</b>	<b>YES</b>	<b>NO</b>



	Make / Serial#	Tread Depth in 1/32"	% Life Remaining	Recapped	Tread Cuts/Chunks	Side Cuts Section
Left Rear	American contractor	24/32	75%	<b>NO</b>	<b>YES</b>	<b>NO</b>



	Make / Serial#	Tread Depth in 1/32"	% Life Remaining	Recapped	Tread Cuts/Chunks	Side Cuts Section
Right Front	general	29/32	90%	<b>NO</b>	<b>YES</b>	<b>NO</b>





---

	Make / Serial#	Tread Depth in 1/32"	% Life Remaining	Recapped	Tread Cuts/Chunks	Side Cuts Section
Right Rear	American contractor	24/32	75%	<b>NO</b>	<b>YES</b>	<b>NO</b>



comment 2

floor mat is torn



---

comment 3

carriage front guard is bent



comment 4

extra pictures of carriage and forks.

